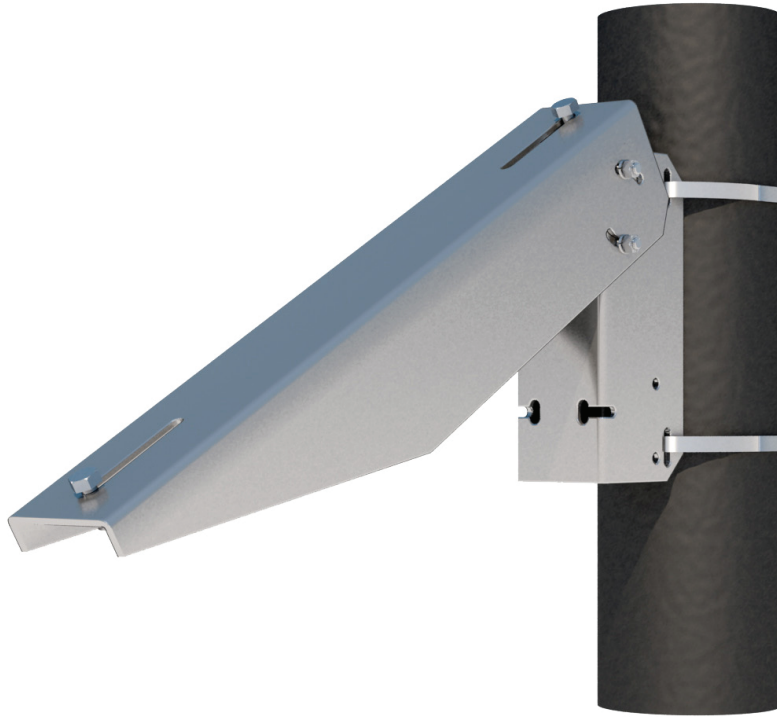




UNI-SERIES SINGLE ARM



Our Single Arm Mount is a simple mounting solution for poles, walls and other flat surfaces. This incredibly versatile mount has been used on the sides of shipping containers, buildings, as an awning, or mounted to just about any flat surface.

- Mounts to poles of 2" to 4" diameter, Schedule 40 (not included)
- Accommodates module widths between 5.26 and 25.5 inches
- Manufactured using heavy-duty corrosion-resistant 5000 series aluminum
- Engineered for 90 mph wind speeds
- In Stock, UPS shippable

To figure out specifically what you will need, please visit us online or contact us via email at sales@tamaracksolar.com.

Single-Arm Side Mounts

Item #	Description
UNI-SA/14.0	Single Arm, Side Pole 14"
UNI-SA/21.5	Single Arm, Side Pole 21.5"
UNI-SA/26.0	Single Arm, Side Pole 26"