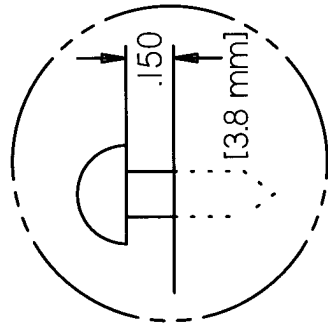


SCREW HEAD HEIGHT:
 0.150" [3.8 mm] OFF BACK PLANE
 DO NOT EXCEED 0.250" [6.4 mm]



SCREW HEAD HEIGHT

SCREW HEAD HEIGHT:
 0.150" [3.8 mm] OFF BACK PLANE
 DO NOT EXCEED 0.250" [6.4 mm]



MS-ZTMP-TS01-B